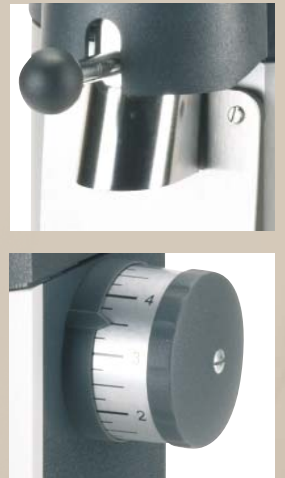


RETAIL GRINDER



805

Powerful and attractive in design



grinding with passion

ditting[®]
— SWISS —



This state of the art coffee grinder is valued for its impressive grinding performance, reliability and functionality and is a perfect fit for small and medium sized coffee shops. The modular system makes this grinder extremely cleaning- and maintenance-friendly.

- Revolutionary magnetic system uses no screws to hold the grinding discs, eliminating area for coffee build-up and reducing maintenance time.

- Uniform, gentle and cool grinding preserves the unique aromas while grinding.
- Continuously variable adjustment of grinding fineness.
- Efficient bag shaking device distributes ground coffee particles evenly into bag.
- Easy to clean, maintain and calibrate.

TECHNICAL DATA

| | 805 |
|---------------------------|---|
| Voltage/frequency/phase | 110-120 V / 60 Hz / 1 |
| Motor power | 0.76 kW / 1.03 hp |
| Rotor current drain | 7 amps |
| Average grinding capacity | 700 g/min / 1.75 lbs/min |
| Hopper capacity | 500 g / 1.1 lbs |
| Grinding disc diameter Ø | 80 mm |
| Net weight | 15.5 kg / 39 lbs |
| Dimensions (w x d x h) | 209 x 273 x 523 mm / 8.2" x 10.8" x 20.6" |
| Standard colour | charcoal grey |
| Certifications | UL, cUL, ETL (NSF-8) |

EQUIPMENT

| | |
|---------------------------|----|
| Available versions | KR |
| Hopper magnet | • |
| Manual bag holding device | • |
| Bag shaker | • |
| Cooling fan | • |
| Overload protection | • |
| Slide cut-off | • |
| Magnetic grinding discs | • |

SPECIAL EQUIPMENT

| | |
|--|---|
| 3.3 lbs hopper | • |
| Special colours | • |
| Other electric specifications available on request | |